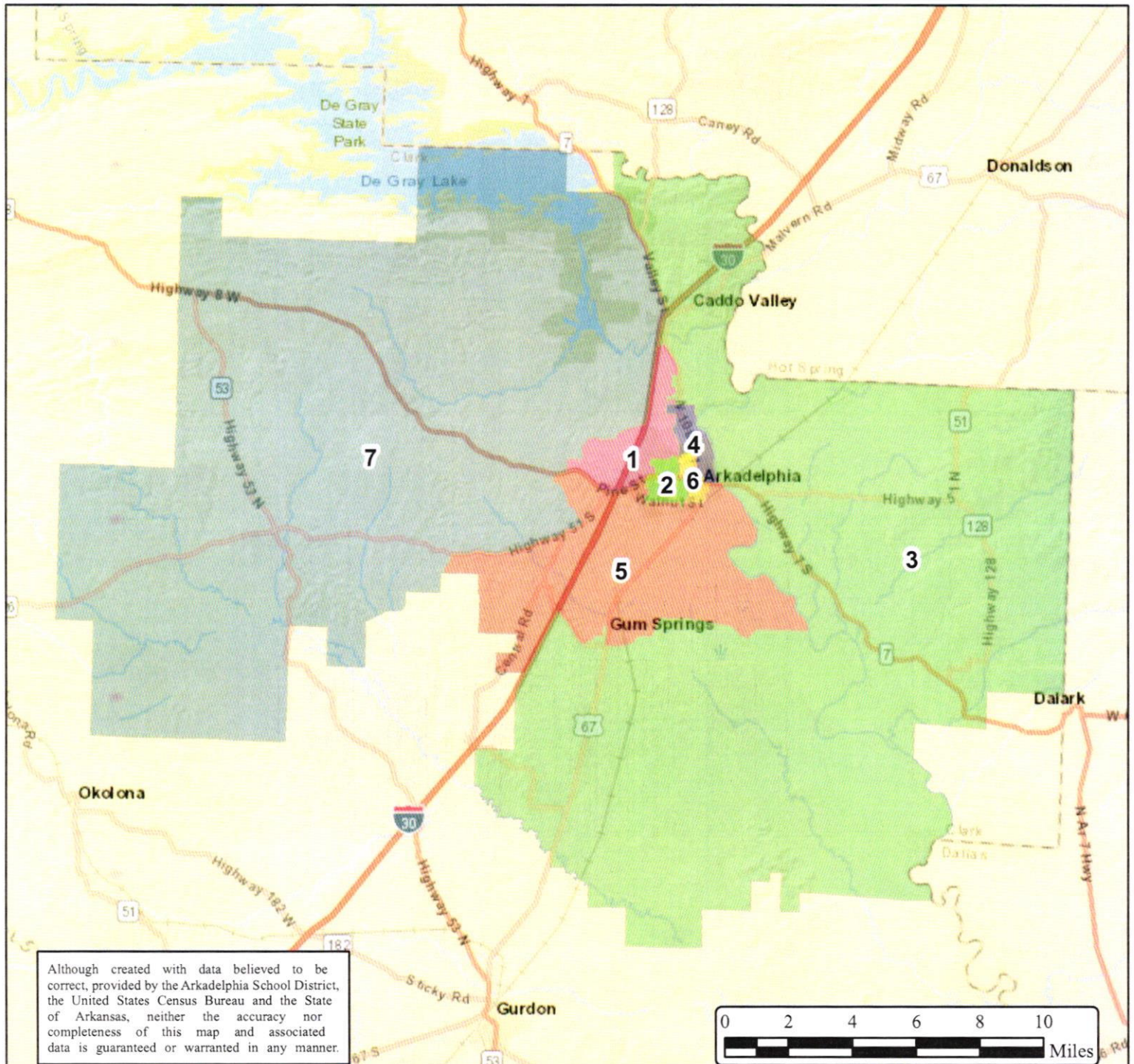




Arkadelphia School District

School Board Zones Overview - Phase 2

Map Created: October 28, 2021



Although created with data believed to be correct, provided by the Arkadelphia School District, the United States Census Bureau and the State of Arkansas, neither the accuracy nor completeness of this map and associated data is guaranteed or warranted in any manner.

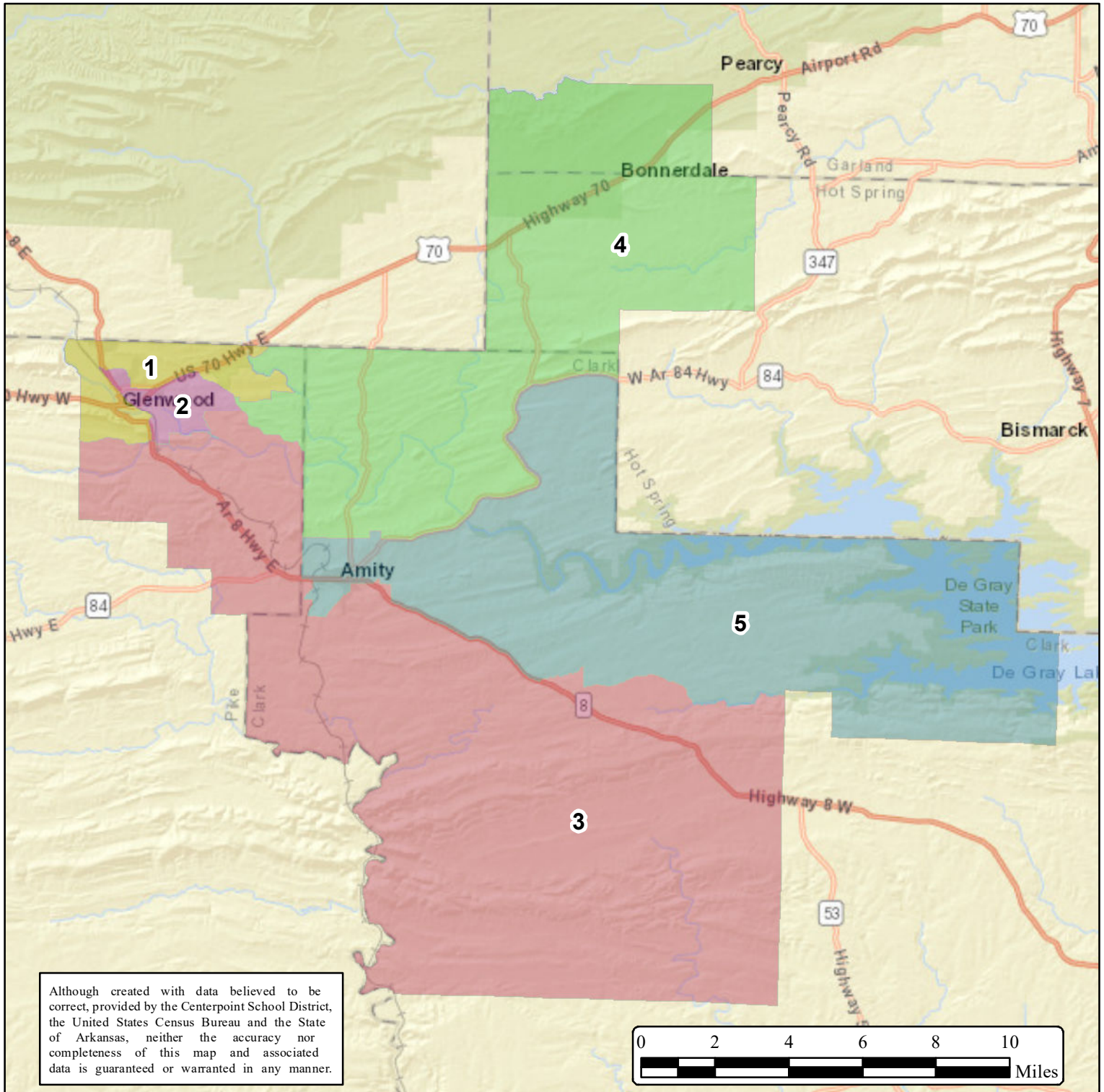
Population Statistics												
Zone	Population	% Deviation	%White	%Black	%Hispanic	%Amdindian	%Asian	%Hawaiian	%Other	% 2+ Races	18 +	18+ % Deviation
1	2316	4.95%	68.09%	24.87%	2.59%	0.17%	0.82%	0.00%	0.09%	3.37%	1841	0.86%
2	2115	-4.16%	36.83%	52.81%	3.97%	0.14%	1.80%	0.05%	0.09%	4.30%	1662	-8.95%
3	2102	-4.75%	68.70%	22.17%	3.71%	0.24%	0.14%	0.05%	0.19%	4.80%	1698	-6.97%
4	2262	2.51%	73.52%	15.25%	5.79%	0.57%	1.72%	0.09%	0.53%	2.52%	2129	16.64%
5	2212	0.24%	65.60%	24.64%	3.71%	0.18%	0.72%	0.05%	0.32%	4.79%	1730	-5.22%
6	2299	4.18%	53.68%	31.62%	5.74%	0.61%	1.09%	0.39%	2.22%	4.65%	1983	8.64%
7	2141	-2.98%	83.93%	10.14%	1.96%	0.37%	0.09%	0.05%	0.37%	3.08%	1734	-5.00%



Centerpoint School District

School Board Zones Overview - Phase 2

Map Created: November 3, 2021



Population Statistics												
Zone	Population	% Deviation	%White	%Black	%Hispanic	%Aminidian	%Asian	%Hawaiian	%Other	% 2+ Races	18 +	18+ % Deviation
1	1056	1.60%	69.32%	0.85%	26.04%	0.47%	0.00%	0.00%	0.00%	3.31%	781	-0.05%
2	1023	-1.58%	75.76%	0.29%	18.57%	0.88%	0.39%	0.00%	0.68%	3.42%	759	-2.87%
3	1037	-0.23%	90.26%	0.00%	4.92%	1.25%	0.10%	0.00%	0.00%	3.47%	765	-2.10%
4	1090	4.87%	85.69%	0.73%	6.42%	0.64%	1.38%	0.00%	0.28%	4.86%	835	6.86%
5	991	-4.66%	89.61%	0.10%	4.94%	0.61%	0.10%	0.00%	0.10%	4.54%	767	-1.84%

